



目錄 Content

Drilling Machine P2

| | |
|-------------------------|------|
| Various Speed - Manual | P 2 |
| Manual | P 4 |
| Automatic - Clutch Type | P 6 |
| Automatic - Pneumatic | P 8 |
| Automatic - Hydraulic | P 10 |

Tapping Machine P12

| | |
|-----------|------|
| Manual | P 12 |
| Automatic | P 14 |

Appearance Dimensions P16

Accessories P22

Multiple Spindle Head P24

| | |
|----------------------------|------|
| Installation Information | P 24 |
| Type NA/D | P 28 |
| Type T | P 30 |
| Type QU/QNU | P 32 |
| Collets & Special Spindles | P 33 |
| Customized Examples | P 35 |

Coolant P36

| | |
|---------------|------|
| Coolant Tank | P 36 |
| Working Table | P 38 |

Automatic Angle Fixed Vise P40

Cross Slide Table P42



Multiple Spindle Head Type NA / D



- ▶ NA-124
- ▶ NA-100



- ▶ D-170



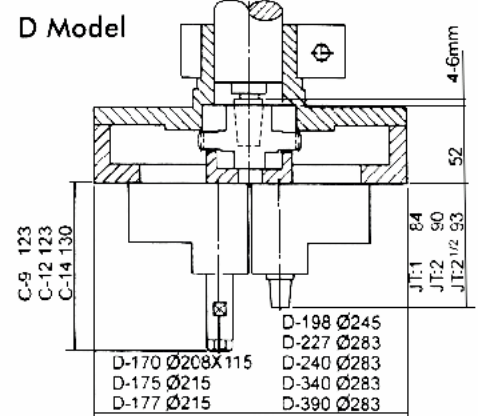
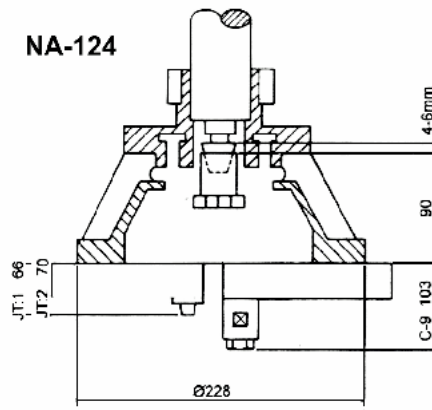
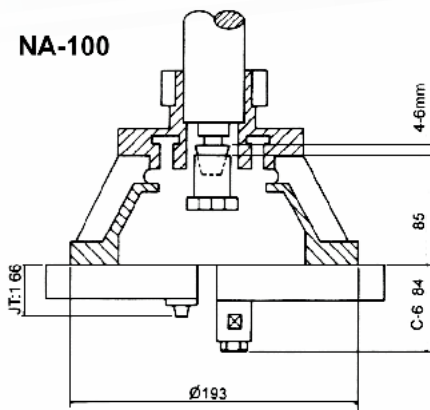
- ▶ D-177
- ▶ D-198
- ▶ D-240



- ▶ D-175 (3 spindles)
- ▶ D-240 (3 spindles)



- ▶ D-340
- ▶ D-390



| Type | | NA100 | NA124 |
|---|---------------------|-----------------|-----------------|
| Dimensions | | | |
| Max. Spindle PCD (mm) | | 100 | 125 |
| Min. Spindle PCD (mm) | | 25 (4-spindled) | 38 (4-spindled) |
| Min. Spindle Pitch By Every 2 Spindles (mm) | | 18.5 | 27 |
| Max. Working Capacity | Drill Capacity (mm) | 6 | 8 |
| | Tapping Capacity | M5 | M7 |
| RPM Ratio To Main Spindle | | 1:1 | 1:1 |
| Numbers Of Spindle | | 2-4 | 2-4 |

| Type | | D170 | D175 | D177 | D192 | D198 | D227 | D240 | D340 | D390 |
|---|---------------------|-------|-------|------|------|-------|-------|-------|-------|-------|
| Dimensions | | | | | | | | | | |
| Max. Spindle PCD (mm) | | 170 | 170 | 177 | 177 | 198 | 227 | 240 | 342 | 390 |
| Min. Spindle PCD (mm) | | 38 | 43 | 55 | 52 | 61 | 98 | 85 | 208 | 245 |
| Min. Spindle Pitch By Every 2 Spindles (mm) | | 38 | 38 | 38 | 38 | 43 | 37 | 56 | 56 | 56 |
| Max. Working Capacity | Drill Capacity (mm) | 13 | 13 | 10 | 6.5 | 13 | 6.5 | 13 | 13 | 13 |
| | Tapping Capacity | M10 | M10 | M8 | M8 | M10 | M8 | M10 | M10 | M10 |
| RPM Ratio To Main Spindle | | 2.7:1 | 2.7:1 | 3:1 | 3:1 | 2.9:1 | 5:1:1 | 3:3:1 | 3:3:1 | 3:3:1 |
| Numbers Of Spindle | | 2 | 3 | 4 | 4 | 4 | 6 | 4 | 4 | 4 |

Multiple Spindle Head Type T



▶ T-72



▶ T-106
▶ T-108
▶ T-121

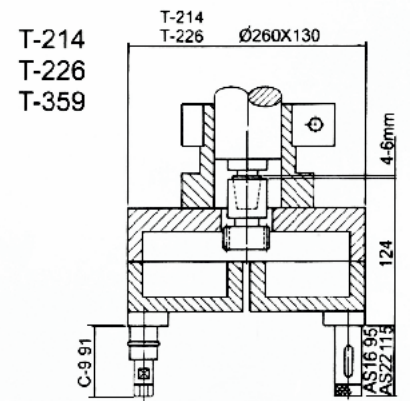
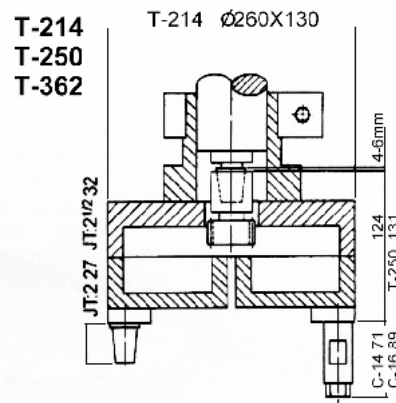
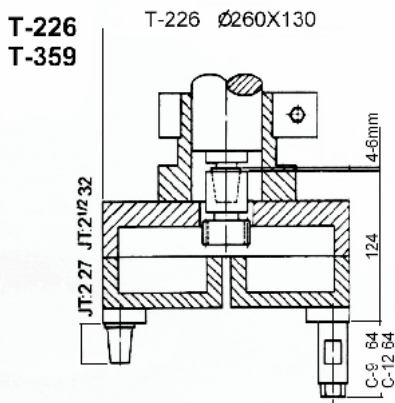
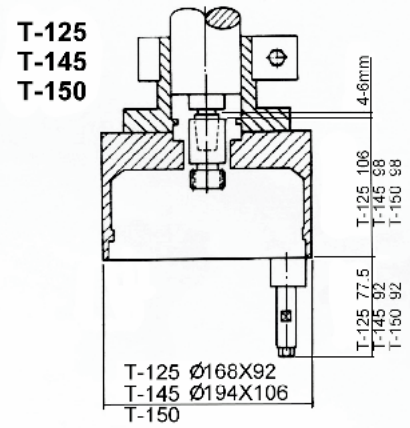
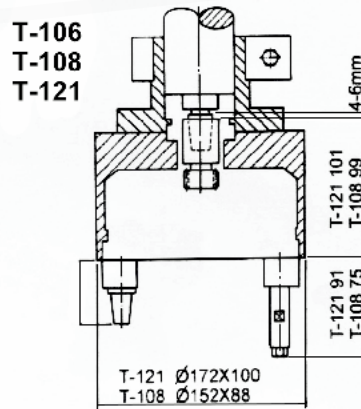
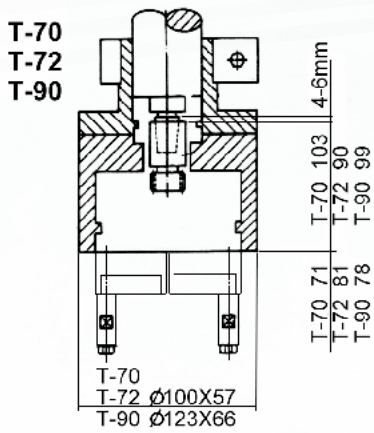


▶ T-214
▶ T-226
(Floating Model)

★ Taiwan Patent No. 79022



▶ T-359



| Type | | T70 | T72 | T90 | T106 | T108 | T121 | T125 | T145 | T150 | T214 | T226 | T250 | T359 |
|---|---------------------|-----|------|-----|------|------|------|------|------|------|------|------|------|------|
| Dimensions | | | | | | | | | | | | | | |
| Max. Spindle Pitch (mm) | | 70 | 72 | 98 | 108 | 108 | 121 | 146 | 146 | 151 | 214 | 226 | 251 | 359 |
| Min. Spindle Pitch (mm) | | 10 | 12.5 | 15 | 18 | 18 | 24 | 24 | 29 | 24 | 45.5 | 33.5 | 60 | 56 |
| Max. Working Capacity | Drill Capacity (mm) | 3 | 4 | 6 | 5 | 6 | 8 | 8 | 10 | 8 | 11 | 9 | 16 | 9 |
| | Tapping Capacity | M2 | M4 | M6 | M4 | M6 | M7 | M7 | M9 | M7 | M12 | M8 | M15 | M8 |
| RPM Ratio To Main Spindle | | 1:1 | 1:1 | 1:1 | 1:1 | 1:1 | 1:1 | 1:1 | 1:1 | 1:1 | 1:1 | 1:1 | 1:1 | 1:1 |
| Numbers Of Spindle | | 2 | 2 | 2 | 2 | 2 | 2 | 2 | 2 | 2 | 2 | 2 | 2 | 2 |
| Support Bearing Type (B=Ball Bearing, C=Copper) | | C | C | C | B | C | B | B | B | B | B | B | B | B |

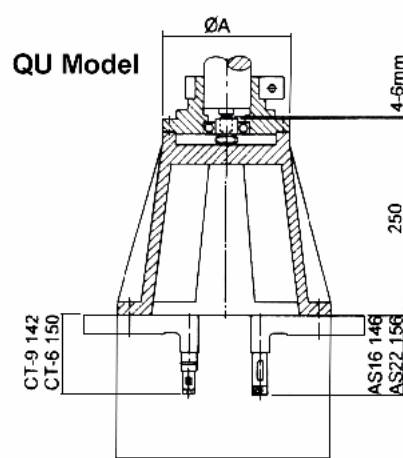
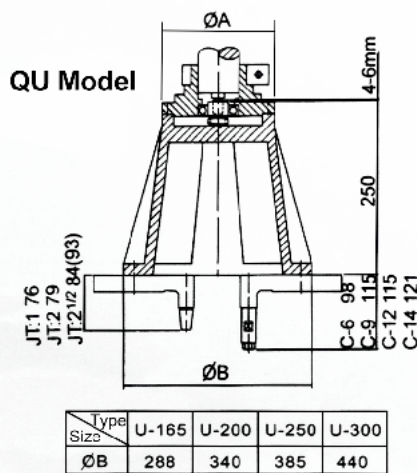
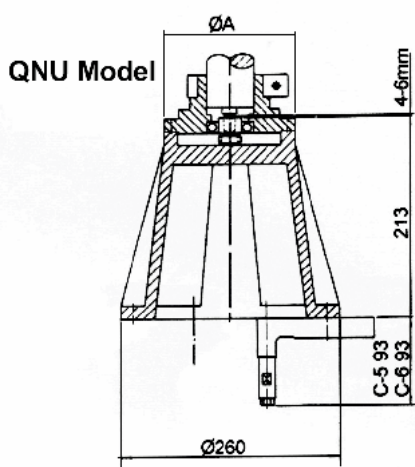
Multiple Spindle Head Type QU / QNU



► QU / QNU Model











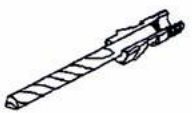


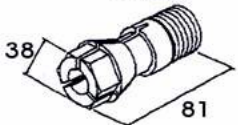
► QU / QNU Model



| Type | | QNU165 | QU165 | QU200 | QU250 | QU300 |
|---|---------------------|--------|-------|-------|-------|-------|
| Dimensions | | | | | | |
| Max. Spindle PCD (mm) | | 165 | 165 | 200 | 250 | 300 |
| Min. Spindle Pitch By Every 2 Spindles (mm) | | 12.5 | 18.5 | 18.5 | 18.5 | 18.5 |
| Max. Working Capacity | Drill Capacity (mm) | 4.5 | 10 | 13 | 13 | 13 |
| | Tapping Capacity | M4 | M12 | M12 | M12 | M12 |
| RPM Ratio To Main Spindle | | 1:1 | 1:1 | 1:1 | 1:1 | 1:1 |
| Numbers Of Spindle | | 2-8 | 2-10 | 2-10 | 2-12 | 2-12 |

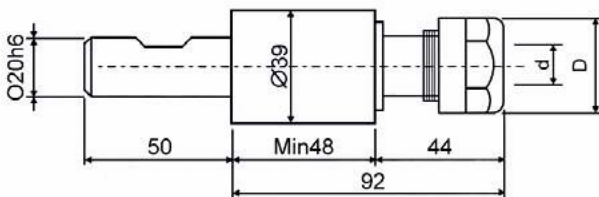
★ ER Collets Models Are Available

► Dimensions Of Collets

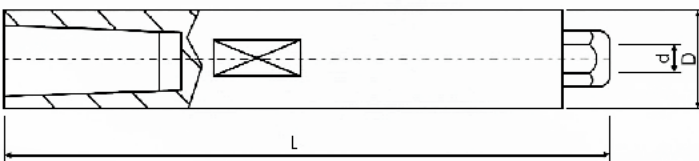
| | | | |
|---|--|--|--|
| CT Type (For Tapping)  | N1 NT1  $\phi 1.1 \sim \phi 4.0$ | C-9 CT-9  $\phi 3.0 \sim \phi 8.0$ | C-16 CT-16  $\phi 10.0 \sim \phi 16.0$ |
| C Type (For Drilling)  | C-5 CT-5  $\phi 1.1 \sim \phi 5.0$ | C-12 CT-12  $\phi 6.1 \sim \phi 11.0$ | C-20 CT-20  $\phi 10.0 \sim \phi 20.0$ |
| CS Type (For Drilling And Chamfering)  (Depth Setting Screw Inside Collets) | C-6 CT-6  $\phi 1.1 \sim \phi 6.0$ | C-14 CT-14  $\phi 6.0 \sim \phi 13.0$ | C-30 CT-30  $\phi 18.0 \sim \phi 30.0$ |

Please notice us the type of cutting tool you are using (Ex: Reamer · Milling · Drilling · Tapping ...)

► Extending Spindle



► Length Appointing Is Available

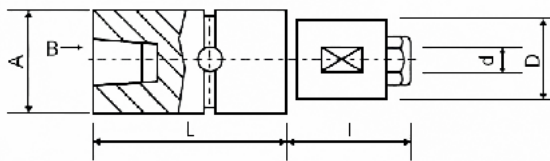


| Size | L | B | D | d |
|-------|-----|-----|-----|---------|
| JC-9 | 85 | JT6 | Ø24 | Ø3~Ø8 |
| JC-12 | 85 | JT6 | Ø24 | Ø6~Ø11 |
| JC-14 | 92 | JT6 | Ø30 | Ø8~Ø13 |
| JC-16 | 115 | JT3 | Ø42 | Ø10~Ø16 |
| JC-20 | 125 | JT4 | Ø44 | Ø13~Ø18 |
| JC-20 | 131 | JT4 | Ø58 | Ø16~Ø28 |
| | | | Ø10 | Ø1.1~Ø4 |

★ Both Available For Single And Multiple Spindle

Collets & Special Spindles

► Floating Spindle For Tapping

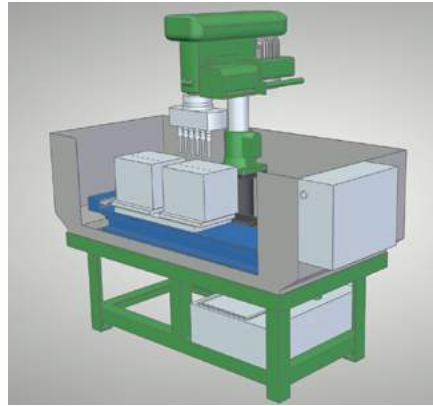


| Size Dimensions | A | B | L | I | D | d |
|--------------------|-----|--------------|-----|----|-----|---------|
| FCJ-5 | Ø26 | JT2,JT6 | 65 | 46 | Ø12 | Ø2~Ø5.5 |
| FCJ-6 | Ø26 | JT2,JT6 | 65 | 50 | Ø17 | Ø2~Ø6 |
| FCJ-9 | Ø26 | JT2,JT6 | 65 | 66 | Ø19 | Ø3~Ø8 |
| FCJ-9 | Ø34 | JT6 | 72 | 37 | Ø26 | Ø3~Ø8 |
| FCJ-9 | Ø34 | M17xP1.0+JT2 | 77 | 37 | Ø26 | Ø3~Ø8 |
| FCJ-9 | Ø34 | M20xP1.0+JT6 | 78 | 37 | Ø26 | Ø3~Ø8 |
| FCJ-12 | Ø34 | JT6 | 72 | 37 | Ø26 | Ø6~Ø11 |
| FCJ-12 | Ø34 | M17xP1.0+JT2 | 77 | 37 | Ø26 | Ø6~Ø11 |
| FCJ-12 | Ø34 | M20xP1.0+JT6 | 78 | 37 | Ø26 | Ø6~Ø11 |
| FCJ-14 | Ø34 | JT6 | 72 | 68 | Ø30 | Ø8~Ø13 |
| FCJ-14 | Ø34 | M17xP1.0+JT2 | 77 | 68 | Ø30 | Ø8~Ø13 |
| FCJ-14 | Ø34 | M20xP1.0+JT6 | 78 | 68 | Ø30 | Ø8~Ø13 |
| FCJ-16 | Ø58 | JT3 | 98 | 43 | Ø44 | Ø10~Ø16 |
| FCJ-16 | Ø58 | JT4 | 110 | 43 | Ø44 | Ø10~Ø16 |
| FCJ-20 | Ø58 | JT3 | 98 | 46 | Ø44 | Ø13~Ø18 |
| FCJ-20 | Ø58 | JT4 | 110 | 47 | Ø44 | Ø13~Ø18 |
| FCJ-30 | Ø58 | JT4 | 110 | 48 | Ø58 | Ø16~Ø28 |

★ Both Available For Single And Multiple Spindle



▶ Special Made Machine With Multi-Spindle & Fixture



Operating Video

<http://goo.gl/HebNHq>



Operating Video

<http://goo.gl/YVooEX>



Operating Video

<http://goo.gl/iwldtT>